



# Sands of Time

March 2006

Volume 2 Issue 1

### Special Points of Interest

- BANQUET
- SCHOLARSHIP
- MUSEUM
- MUSIC

### In This Issue

Presidents Message	1
Scholarship Fund	1
Pioneer Museum	2
Jukebox Kings	3
Membership Form	4

## President's Message

### Reaching Out

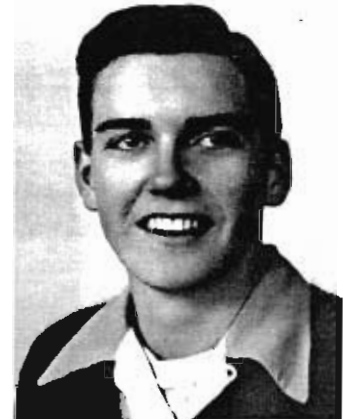
The SHS Alumni Association Articles; entitles all former students and faculty members to join the Association by paying Annual Member dues, or a Lifetime Membership fee established by the Board of Directors.

We honor former graduating students in the year they have graduated, traditionally in five year increments. However, we also recognize those former students that may have transferred to other

schools or may have dropped out of school and did not graduate. The same applies to former teachers.

In order to promote membership in the Alumni Association, we also need to pursue recent high school graduates and encourage them to join the Association. Since age is a factor in declining membership along with former students and teachers moving out of the area.

Our Aflyer@ is posted in several local establishments, reaching out to the public and former



1946

students or faculty members of Siuslaw High School.

We are looking forward to working with our officers and board members in promoting the Siuslaw Alumni Association.

Andy Nordahl,  
President

## Scholarship Fund

The Siuslaw Alumni Association Awards 2005 Recipient—  
a scholarship to a  
graduating Siuslaw  
High School Senior. Becky Engle  
Scholarship Committee: Zane Ziemer  
and Dick Whitmore.

*The Board thanks all the donors to the  
Scholarship Fund!*

## REUNION 2006

Annual Siuslaw  
Alumni Association  
Banquet. Recognizing  
Classes of  
1956 50 years  
1981 25 years

Siuslaw Alumni Assoc.  
Board Members

Officers

Zane Ziemer, Chairman  
Andy Nordahl, President  
Ivan Olson, VP int  
Phyllis Bennett Wells, Treas.  
Betty Ryder, Olson, Sec.

Directors

Connie Smith Nitschke  
Ramona Mink Slocum  
Darlene Strahm Rinard  
Penny Larson Hendrickson  
Ida Holden Hagedorn  
Ellen Spencer Zimmerman  
Lou Anne Wood Patterson int  
Frank Suniga int

The SANDS OF TIME

Editor, Andy Nordahl  
Publisher, Evelyn Nordahl  
Membership,  
Lou Anne Patterson

Process; subject to editing,  
omissions, revisions.



*Siuslaw Pioneer Museum.  
Association, Inc.  
a non-profit Corporation*

**Museum Hours**

Tues. through Sun.  
12:00 p.m.—4:00 p.m.  
Phone (541) 997-7884  
E-mail—museum@winfinity.com  
Closed January

## REUNION 2005

The Siuslaw Alumni Associations Annual REUNION was held at the Florence Elks lodge on Saturday, September 10, 2005. We had a large gathering and thanks to the class of 1955, for their great turnout.

The buffet dinner was served at 6:00 PM. After dinner we had a short meeting and Ivan Olson was master of ceremonies. He introduced Andy Nordahl, as the new President of the Alumni Association. The outgoing President, Zane Ziemer will become Board Chairman. Ivan passed the microphone among the guests and everyone was introduced. Ida Holden Hagedorn passed out gifts to the furthest traveled and oldest graduating class to

Georgine Hayertz Herring and Kenneth Hatch.

For entertainment Charles Suniga played the musical keyboards and provided the vocals while many of the couples danced to the music. He is the son Frank and Zelda Suniga of Salem. On Sunday morning, many of us enjoyed a buffet breakfast at the Elks

The Board of Directors is scheduled to meet again on March 18, 2006 at the Red Lion Hotel at 205 Coburg Road in Eugene at 11:00 AM. All alumni members and spouses are welcome.

We thank all the Board Members, for their hard work and dedication to the Alumni Association.

## LOOKING BACK

When we attend class reunions, we are often reminded of our high school years when we reminisce with some of our former class mates.

One of the familiar landmarks in Florence, is the old grade school. It was built in 1905 and is located on Second and Maple Street. The building has been restored and has a new history. This past year the Siuslaw Pioneer Museum purchased the property and has moved all of

their artifacts into the building.

Another interesting landmark is the old Herd Home property directly across the Street and North of the old Kyle building. A 22 unit condominium complex and 4 commercial units now occupy the property.

Last but not least, all of the public schools in Florence are now centrally located on Oak Street one block west of Highway 101.

We encourage all former students and teachers to attend our annual class reunions. Our next Siuslaw Alumni Reunion and Banquet is scheduled for the second Saturday in September, 2006.

Andy

Siuslaw Pioneer Museum

Former: Florence Grammar School

1905

The Museum will officially open at  
278 Maple Street—Florence

on February 1, 2006

# SAA MEMBERSHIP

All former students, graduates and teachers of Siuslaw High School are eligible to become members of the Siuslaw Alumni Association.

Membership in the Siuslaw Alumni Association has numerous benefits; namely, it allows us to contact and/or keep in touch with friends and former classmates. One way we try to develop that benefit is by having an annual All-

Class Reunion, usually held the second weekend of September.

We are adding to, changing information as requested and maintaining a current mailing list that can be used as a source for class reunions other than the All-Class Reunion. We use this mailing list to send out the annual newsletter and the invitations for the September All-Class Re-

union. If you know someone who is interested in receiving information about SAA, please contact us so we can add that person(s) to the SAA mailing list.

Two SAA Board meetings are held each year, one in March and a second one in September. Any member of SAA is encouraged to attend.

Lou Anne

# CHATTER BOX

We often tell people that ask if we have lived in Florence long? Well yes, we are natives and we came home to roost in 1992.

We do see a few of our old classmates in the area from time to time. Bob Barrett we see often. Leo Meadows, Zane Ziemer, Gene Martin, Keith Robinson,

Bob Merz, Bob Chapman, Ole Fosback, Ardith Hartzel, Ida Holden and Ray Circle are several that come to mind..

A lot of water has flowed under the bridge since 1946. We attended our first Siuslaw Alumni Association Board Meeting in 2004. It made me realize, this a unique way of seeing and working with many of

our old school mates. The Board meets twice a year and sponsors a Scholarship Fund and a Banquet the second Saturday in September of each year.

Florence has come a long way since the 1940's. A retirement center and a good place to roost. Andy



**THE JUKEBOX KINGS L TO R  
DAVE CRADDOCK KEYBOARDS  
KEN MACE BASS PLAYER  
DENNIS DUERST ON DRUMS**

-----REUNION 2006-----

ANNUAL  
SIUSLAW HIGH SCHOOL BANQUET

RECOGNIZING THE CLASSES OF  
1981 - 25 YEARS AND 1956 - 50 YEARS

ALL CLASSES ARE INVITED

PLACE: FLORENCE ELKS LODGE

TIME: SATURDAY, SEPT. 09, 2006

MUSIC: THE JUKEBOX KINGS